



HIGHLIGHTS OF 2015



**Find out what the DHL UK Foundation
achieved in 2015 and ways
to get involved in 2016**

Dear colleagues,

A very special thank you to everyone who fundraised and volunteered to support their local community, chosen charity or DHL UK Foundation community programme in 2015.

The focus of the Foundation's work is to support disadvantaged children, and through your support of our charity partnerships you have helped young people to grow in confidence, feel positive about what they can achieve and believe in their future. This is something we should all be immensely proud of.

Two exciting new partnerships were launched last year, with Teach First and the University of Edinburgh. These new programmes are enabling the Foundation to help even more young people from challenging backgrounds to experience the best possible education and to have the opportunity to develop the essential workplace skills they will need for the future.

There were also exciting developments to our established colleague engagement programmes - Transform It! increased its focus on truly transformational projects that benefit disadvantaged young people and more charities than ever are now supported equally through Match It!

As we move into 2016, the Board of Trustees are reviewing the aims, objectives and achievements of the Foundation to ensure we are able to provide the best possible support to the children, young people and communities who most need our help. We look forward to keeping you updated on the outcomes of our Strategic Review via the DHL UK Foundation website - www.dhlukfoundation.org

Thank you again for your continued support and contribution.

Chris



Chris Stephens,
Chairman of Trustees

Sonia

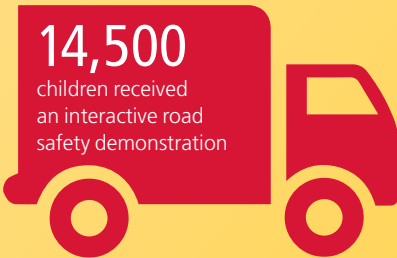


Sonia Chhatwal,
DHL UK Foundation Director

2015 YEAR AT A GLANCE

Over £1.8 million invested in charitable grants, donations and activities

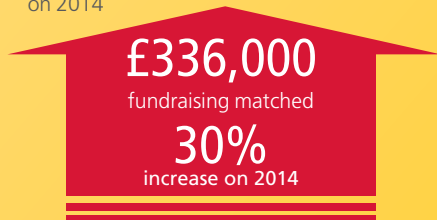
ROAD SAFETY



- Visited **110 schools**

ENGAGEMENT

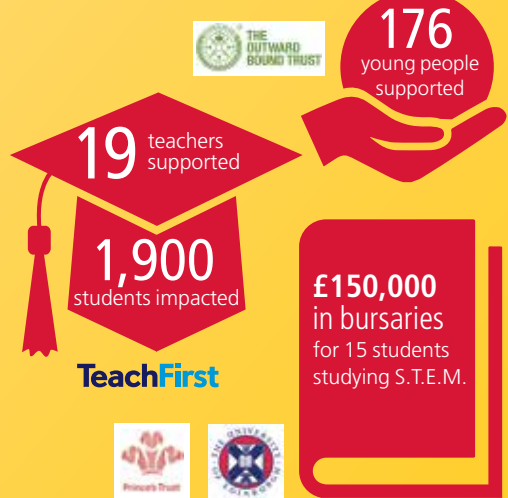
- **35,000 hours** volunteered - **22% increase** on 2014



- Over **400 charities** supported
- **8 community projects** transformed

EMPLOYABILITY

Developing skills, confidence and raising aspirations in young people:



- **72 unemployed young people** gained skills and work experience

- **£344,000** donated to IntoUniversity

IntoUniversity 

RESPONSIBILITY. SIMPLY DELIVERED.

The DHL UK Foundation works in partnership with the DHL businesses and contributes towards DHL's UK Corporate Responsibility mission of being a leading contributor to the community – by protecting vulnerable road users, offering work-place opportunities and supporting DHL employees in their community activities.

"It's more important than ever for DHL to be giving back to the communities where we operate and we do this through a range of programmes run by the DHL business and in partnership with the DHL UK Foundation."

Sharon Davies, DHL UK
Senior Director, Corporate Affairs UK&I

"Thank you for supporting the DHL UK Foundation in 2015. DHL businesses in the UK reap enormous benefit from our involvement with the DHL UK Foundation's charity partnerships and our colleagues are proud to work for a company that cares about the communities it works in. I would encourage as many employees as possible to get involved in the range of programmes on offer – we really can make a difference!"

Phil Couchman, CEO of DHL Express &
Chair of the Collaboration Board



HOW DHL COLLEAGUES HELPED IN 2015

Wherever you are in the UK there is an opportunity to get involved.

Look into Logistics with Outward Bound

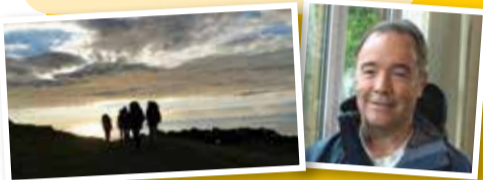


Developing skills and confidence through outdoor learning

1 Ian Lucas, mentor from DHL Supply Chain, led a group of 24 students on a week-long outdoor education residential.

"It was a real test of patience, perseverance, goal-setting, communication and teamwork – it's an experience that I'll never forget."

Ian Lucas, DHL Head of Strategy



2 Following the residential, students from the Weston Favell Academy in Northampton visited their local DHL site to learn more about the logistics industry and careers at DHL.

"Helping young people think about their future and inspiring them about the world of work is incredibly important. Witnessing the change in young people and being a part of that is really special."

Elizabeth McQueen, Project Manager & DHL UK Foundation Trustee



TACS

Promoting road safety in schools across the UK

3 Tom McCann, Kevin Lawrenson and Gary Sanders from DHL Supply Chain, Automotive in Liverpool visited 42 schools between them in 2015, delivering interactive road safety demonstrations to over 1,400 children.

"I would like to thank the team for a professional and lively presentation. They were excellent at every level."

Mr Connors, Teacher



The University of Edinburgh

4 Fifteen students from disadvantaged backgrounds studying a Science, Technology, Engineering or Maths degree received £150,000 of funding to help them through their five year course at the University.



"This is a superb opportunity to help create the future leaders in our industry – we look forward to showcasing career opportunities at DHL to the students."

Chris Stephens, DHL UK Foundation Chairman

Match It!

Supporting colleague fundraising and volunteering

5 DHL colleagues submitted over 850 applications to Match It! in 2015. Nick Winder won the 2015 Match It! Individual Fundraiser Award after raising over £10,000 for Action for Children.

"Charities need every penny they can get, and being able to boost my fundraising with Match It! is a great help!"

Nick Winder, Network Director, DHL Retail, Coventry

Transform It!

Transforming local community projects for disadvantaged children and young people

6 Rae Owens and ten volunteers from the DHL Supply Chain Debenhams site in Sherburn transformed their local Peter Pan Nursery. The £10,000 grant was used



to replace the conservatory roof, lay an artificial lawn and build a new playhouse at the Nursery.

"Transform It! has really lived up to its name. It's so lovely to see the play areas transformed into safer, cleaner spaces that the children can use and enjoy all year round! Peter Pan Nursery is close to our hearts as it supports children and families with additional needs within our community."

Rae Owens, DHL First Line Manager

Get Into Logistics with The Prince's Trust

Skills development and work experience for unemployed young people across the UK



7 "We employ a lot of people from the Dartford area and as a site we're proud to give back to our local community. Offering unemployed young people work experience and employment is the right thing to do and great for colleagues who mentor the young people."

Brian Keyworth, General Manager, DHL Supply Chain, Sainsbury's Distribution Centre, Dartford



Community Heroes

Celebrating the exceptional achievements of DHL colleagues in communities across the UK

8 Jane Shaka from Williams Lea attended the prestigious Community Heroes Awards ceremony. Jane has been supporting charities for over ten years and her achievements were recognised with the Unsung Hero Award. In 2015 over £8,000 was donated to the winners' charities.

"What an honour, I can't believe I won! I hope Community Heroes motivates others to think about helping someone who has less or is in need."

Jane Shaka, Workflow Supervisor, Williams Lea



Teach First

Tackling educational disadvantage and inspiring students about the career opportunities in logistics across the UK

TeachFirst

10 Paul Manley and his team hosted an inspirational Workplace Workshop at the DHL Express UK Head Office for 16 pupils from the Heston Community School. They learnt about career opportunities in the logistics industry, met Apprentices from a range of functions across the business and even met Phil Couchman, the CEO of DHL Express.

11 Ed Kuzemko is one of ten DHL volunteers coaching a Teacher with Teach First.

"I've been coaching Abi, a newly qualified teacher from Wolverhampton for over six months now. I've helped Abi be the best she can be in the classroom by thinking differently about leadership, how she communicates and her work-life balance."

Ed Kuzemko, DHL Operations Director



12 Tony Cooper, Country Managing Director UK & Nordics for DHL Mail was a Guest Teacher for the day and taught a lesson to Year 11 Geography pupils from Rivers Academy in Feltham. Tony shared his career journey and insights into why Geography is important to the DHL business.

"It was really inspiring for our pupils who heard about the wide range of careers on offer within the logistics industry. It particularly helped them to understand what they learn in the classroom is relevant to how businesses make decisions."

Mr Chambers, Geography Teacher



Payroll Giving

13 An easy tax-free way to donate to charity

"DHL colleagues have donated over £750,000 via payroll giving since 2011. In 2015 we hosted more than 200 site visits and over 3,800 colleagues signed up. A huge thank you to everyone involved."

Tanya Cotter, UK CR Manager, DHL

IntoUniversity

Raising education aspirations for young people aged 11-16

9 Neil Pope and colleagues from Bristol have supported their local IntoUniversity Centre by organising a volunteer team day where the team renovated the overgrown outdoor garden into an interactive outdoor learning space.

"I know how tough some of the communities in Bristol are for young people – which is why organisations like IntoUniversity and Teach First, who raise aspirations of young people, are so important. Being able to invest some time and share my skills is a great opportunity to support young people in my community."

Neil Pope, Business Development Director, DHL Supply Chain Automotive



Global Volunteer Day

A global celebration of employee volunteering across Deutsche Post DHL

14 Richard Selkirk, Operations Agent at DHL Express in Maidstone, volunteered with Spadework, a charity that works with disabled people in Kent. Richard was one of more than 1,400 colleagues who volunteered over 50,000 hours for charities in the UK.

"I've supported Spadework with their rebranding and I regularly help organise their local Farmers Market. I'm able to do things that they're unable to do with such limited finances."

Richard Selkirk, Operations Agent at DHL Express, Maidstone

GET INVOLVED

**We hope you're inspired by the many opportunities to get involved.
You can:**

- Coach a Teacher with Teach First
- Apply to Match It! for your fundraising and volunteering efforts
- Transform a local community project with Transform It!
- Celebrate achievements at Community Heroes
- Mentor young people with Outward Bound
- Organise site visits to promote payroll giving
- Capture volunteering hours for Global Volunteer Day

Meet the team



Sonia Chhatwal – DHL UK
Foundation Director
Sonia.Chhatwal@dhl.com



Sharon Davies – DHL UK
Senior Director of Corporate Affairs UKI
Sharon.Davies@dhl.com



Andrew Button-Stephens – DHL UK
Foundation Programme Manager
Andrew.ButtonStephens@dhl.com



Tanya Cotter – DHL UK
Corporate Responsibility Manager
Tanya.Cotter@dhl.com



Nicky Donovan – DHL UK
Foundation Programme Manager
Nicky.Donovan@dhl.com



Laura Frary – DHL UK
Corporate Responsibility Adviser
Laura.Frary@dhl.com

Get in touch

Visit the website - www.dhlukfoundation.org

Email a member of the team

Call our helpline on 01285 841 914

